



M & E

**PICK HERE TO VISIT
OUR WEBSITE.**

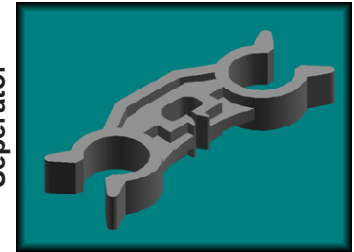
**DESIGNER AND MANUFACTURER
OF QUALITY PARTS**

www.entorno-industrial.com



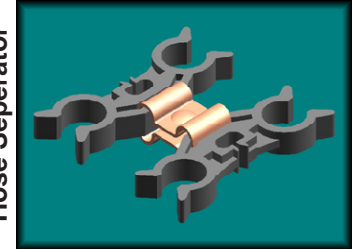
Description	Part Number
3/8" Standard Hose Sperator	01-099-001-CBK
1/2" Standard Hose Sperator	01-099-010-CBK
3/8"-1/4" Standard Hose Sperator	01-100-011-CBK
3/8"-1/2" Standard Hose Sperator	01-100-030-CBK

Standard Hose Sperator



Description	Part Number
3/8" Standard 4 Hole Hose Sperator	09-018-021A
1/2" Standard 4 Hole Hose Sperator	09-020-008A
3/8"-1/4" Standard 4 Hole Hose Sperator	09-025-004A
3/8"-1/2" Standard 4 Hole Hose Sperator	-

Standard 4 Hole Hose Sperator



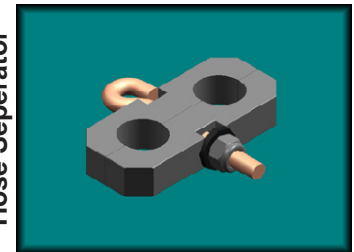
Description	Part Number
3/8" Heavy Duty In-Line Hose Sperator	01-099-014A
1/2" Heavy Duty In-Line Hose Sperator	01-099-015A
3/8"-1/4" Heavy Duty In-Line Hose Sperator	09-020-014A

Heavy Duty In-Line Hose Sperator



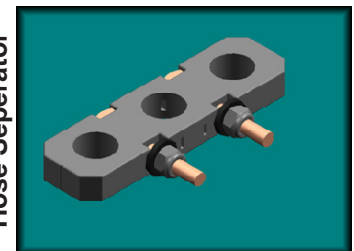
Description	Part Number
3/8" Heavy Duty W/Eye Bolt Hose Sperator	01-099-011A
1/2" Heavy Duty W/Eye Bolt Hose Sperator	01-099-013A
3/8"-1/4" H.D. W/Eye Bolt Hose Sperator	09-019-001A

H.D. W/Eye Bolt Hose Sperator



Description	Part Number (No Tie)	Part Number (With Tie)
3/8" 3 Hole In-Line	09-017-022A	09-017-026A
1/4"-3/8"-1/4" 3 Hole In-Line	09-032-028A	-
1/4"-3/8"-3/8" 3 Hole In-Line	-	09-033-018A

H.D. 3 Hole In-Line Hose Sperator



Description	Part Number (No Tie)	Part Number (With Tie)
3/8" 3 Hole W/V-Bolt	09-018-019A	09-020-017A
1/4"-3/8"-1/4" 3 Hole W/V-Bolt	09-032-020A	-
1/4"-3/8"-3/8" 3 Hole W/V-Bolt	-	-

H.D. 3 Hole W/V-Bolt Hose Sep.

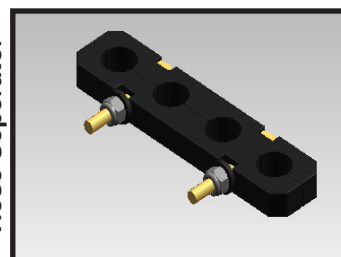


Brake Hose Separators (Continued)

Sizes Are Brake Hose I.D.

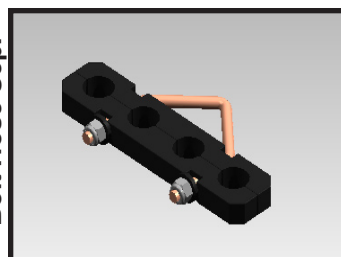
Description	Part Number
3/8" Heavy Duty 4 Hole In-Line Hose Sep.	09-032-029A

H.D. 4 Hole In-Line
Hose Separator



Description	Part Number
3/8" Heavy Duty 4 Hole W/V-Bolt Hose Sep.	-

H.D. 4 Hole W/V-
Bolt Hose Sep.



Springs

Zinc & Yellow dichromate Finish - Other Sizes and Finishes Available

Description	O/A Length	Wire Diameter	Part Number
2 1/2" Long x 3/4" O.D. Spring	2.5"	0.0625"	09-016-001-ZY96
11" Long x 3/4" O.D. Spring	11.1"	0.0625"	09-019-011-ZY96
13" Long x 3/4" O.D. Spring	13.6"	0.0625"	09-011-020-ZY96
9" Long x 1 1/16" O.D. Spring	9"	0.080"	09-019-021-ZY96
11" Long x 1 1/16" O.D. Spring	11.1"	0.080"	09-030-023-ZY96
13 1/2" Long x 1 1/16" O.D. Spring	13.5"	0.080"	09-019-028-ZY-96
16 1/2" Long x 1 1/16" O.D. Spring	16.5"	0.080"	09-013-001-ZY96
25" Long x 1 1/16" O.D. Spring	25"	0.080"	09-008-015-ZY96



Spring Assemblies

How to Specify Your Spring Assembly:

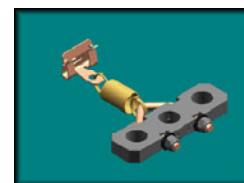
Spring Size, Attachment Hardware, and Hose Separator

Example:

25" Long x 1 1/16" O.D. Spring With Beam Clip And 3/8" Heavy Duty Hose Separator

Attachment Hardware Options:

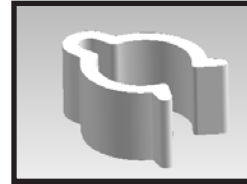
Beam Clip, Eye Bolt, Eye Bolt W/Nuts. or Spring Plate





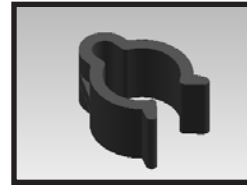
For 0.180" Diameter Sensor Wire (Not Standard Size):

3/8"	1/2"	Description	Part Number
X	X	3/8"-1/2" ABS Sensor Wire Clip 0.180" Wire	09-021-022-GRY
	X	1/2" Only ABS Sensor Wire Clip 0.180" Wire	01-100-026-180-GRY



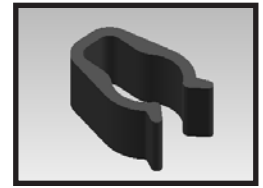
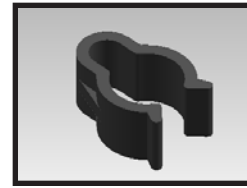
For 0.250" Diameter Sensor Wire (Standard Size):

3/8"	1/2"	Description	Part Number
X	X	3/8"-1/2" ABS Sensor Wire Clip 0.250" Wire	01-100-007-CBK
	X	1/2" Only ABS Sensor Wire Clip 0.180" Wire	01-100-026-250-CBK



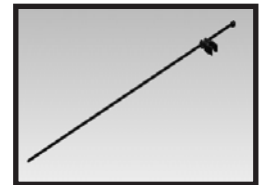
For 0.375" Diameter Loom & ABS Power Line:

3/8"	1/2"	Description	Part Number
X	X	3/8"-1/2" ABS Sensor Wire Clip 0.375" Loom	01-099-099-CBK
X	X	3/8"-1/2" ABS Power Wire (0.37"-0.44") Clip	09-020-006-CBK



Hose Clip W/Cable Tie:

3/8"	1/2"	Description	Part Number
X	X	3/8"-1/2" Hose Clip W/7 1/2" Cable Tie	01-100-013A
X	X	3/8"-1/2" Hose Clip W/28" Cable Tie	01-102-002A



Snap Clip Both Wire Sizes and 3/8" Loom:

3/8"	1/2"	Description	Part Number
X	X	3/8"-1/2" Hose Clip W/ABS Snap Clip	09-031-026A
		10Ga-1/4" Beam Clip W/ABS Snap Clip	-
		5/16-1/2" Beam Clip W/ABS Snap Clip	09-031-027A
		9/16-3/4" Beam Clip W/ABS Snap Clip	-



Cam & Axle Clips Both Wire Sizes and 3/8" Loom:

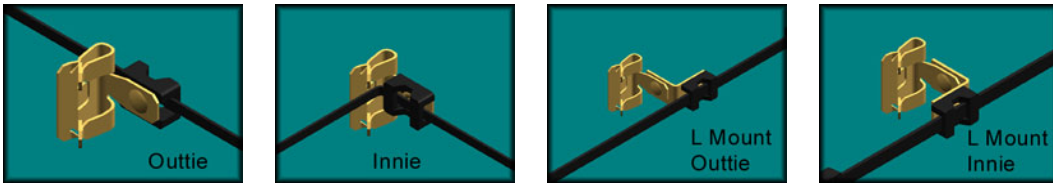
Description	Part Number
2.25" Diameter Cam ABS Clip	01-100-020-CBK
5" Diameter Axle ABS Clip	01-099-098-CBK
Square Axle ABS Clip	01-099-100-CBK
ABS Axle Strain Relief (Inner)	01-100-022-CBK-1
ABS Axle Strain Relief (Outer)	01-100-022-CBK-2





Standard Beam Clip Assemblies

Sizes Are Flange Thickness



Description	Grip Range	Part Number
Standard Outtie Beam Clip W/7 1/2" Cable Tie	1/8"-1/4"	09-016-011A
Standard Innie Beam Clip W/7 1/2" Cable Tie	1/8"-1/4"	09-015-009A
Standard Outtie Beam Clip W/14" Heavy Duty Cable Tie	1/8"-1/4"	09-017-020A
Standard Innie Beam Clip W/14" Heavy Duty Cable Tie	1/8"-1/4"	09-017-021A
Medium Outtie Beam Clip W/8" Heavy Duty Cable Tie	5/16"-1/2"	09-020-016A
Large Outtie Beam Clip W/8" Heavy Duty Cable Tie	9/16"-3/4"	09-020-011A
Standard L Mount Outtie Beam Clip W/14" HD Cable Tie	1/8"-1/4"	09-020-024A
Standard L Mount Innie Beam Clip W/14" HD Cable Tie	1/8"-1/4"	09-020-022A

Heavy Duty Beam Clip Assemblies

Sizes Are Flange Thickness

Description	Grip Range	Part Number
Heavy Duty Beam Clip W/8" Heavy Duty Cable Tie	1/8"-1/4"	09-016-027A
Heavy Duty Beam Clip W/14" Heavy Duty Cable Tie	1/8"-1/4"	09-020-001A



CrossMember Clip

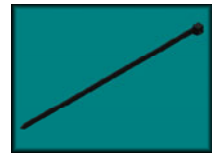
Description	Part Number
Crossmember Clip	01-100-033-CBK





Cable Ties

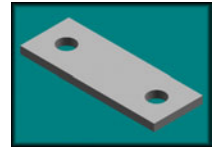
Other Sizes and Colors Available



Description	Bundle Dia.	Part Number
5.6" x 30# Cable Tie Black (1000 Pack)	1/16"-1 1/4"	06-003-004-M
7.5" x 50# Cable Tie Black (1000 Pack)	1/16"-1 3/4"	06-004-010-M
8.5" x 40# Cable Tie Black (1000 Pack)	1/16"-2"	06-003-025-M
11.1" x 50# Cable Tie Black (100 Pack)	1/16"-3"	06-005-004-C
14.2" x 120# Cable Tie Black (100 Pack)	3/16"-4"	06-006-005-C
18" x 120# Cable Tie Black (100 Pack)	3/16"-4 7/8"	06-006-010-C
24" x 175# Cable Tie Black (100 Pack)	3/16"-7 1/4"	06-006-017
36" x 175# Cable Tie Black (50 Pack)	2 3/4"-10 3/4"	06-006-021

Gaskets

Special Gaskets Available Call For Details



Description	Part Number
Air Tank Gasket - 3/16" Thick Solid Neoprene 50-60 Duro.	09-017-003
Most OEM Door Hardware Gaskets	Call

